

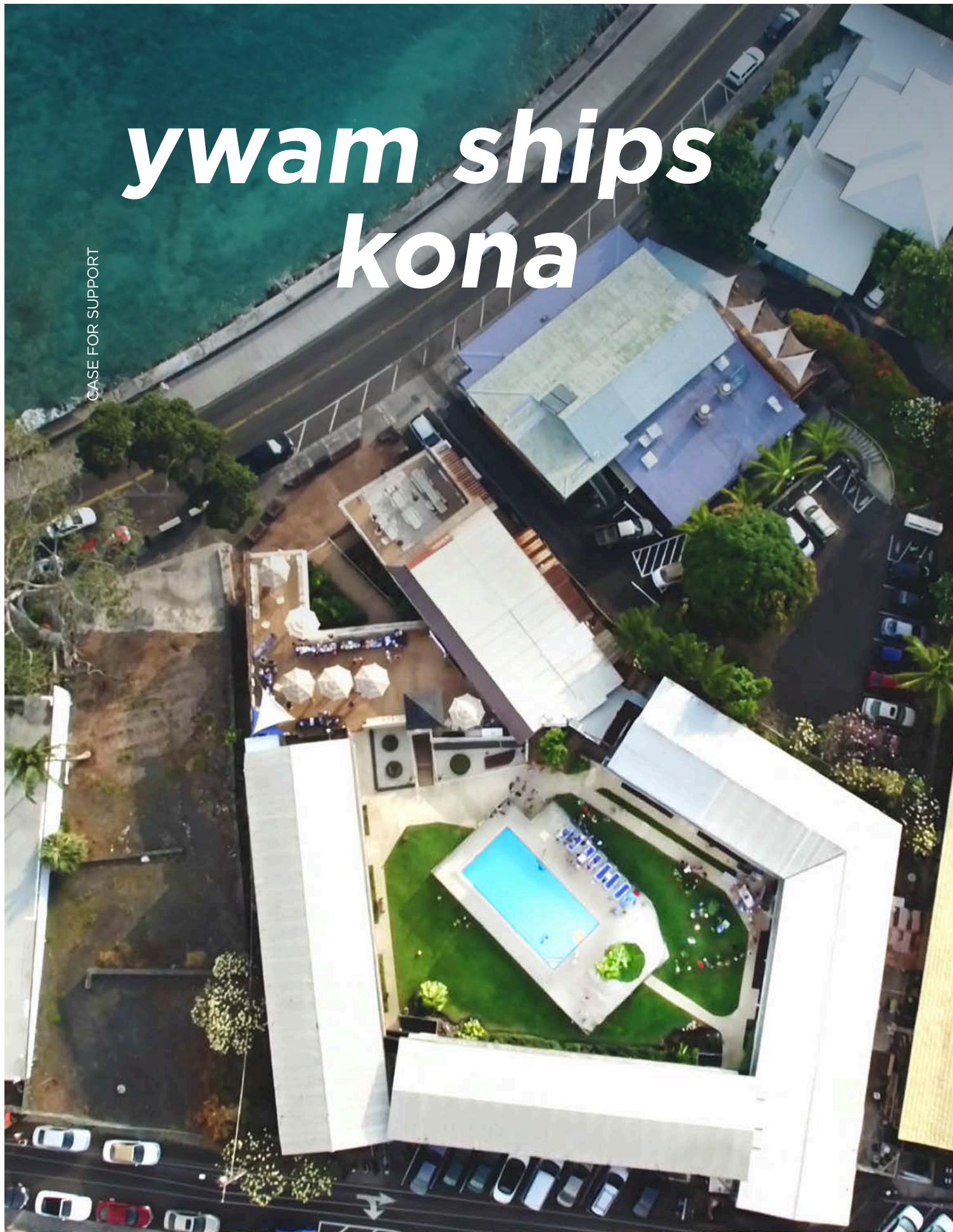


A PERMANENT

home

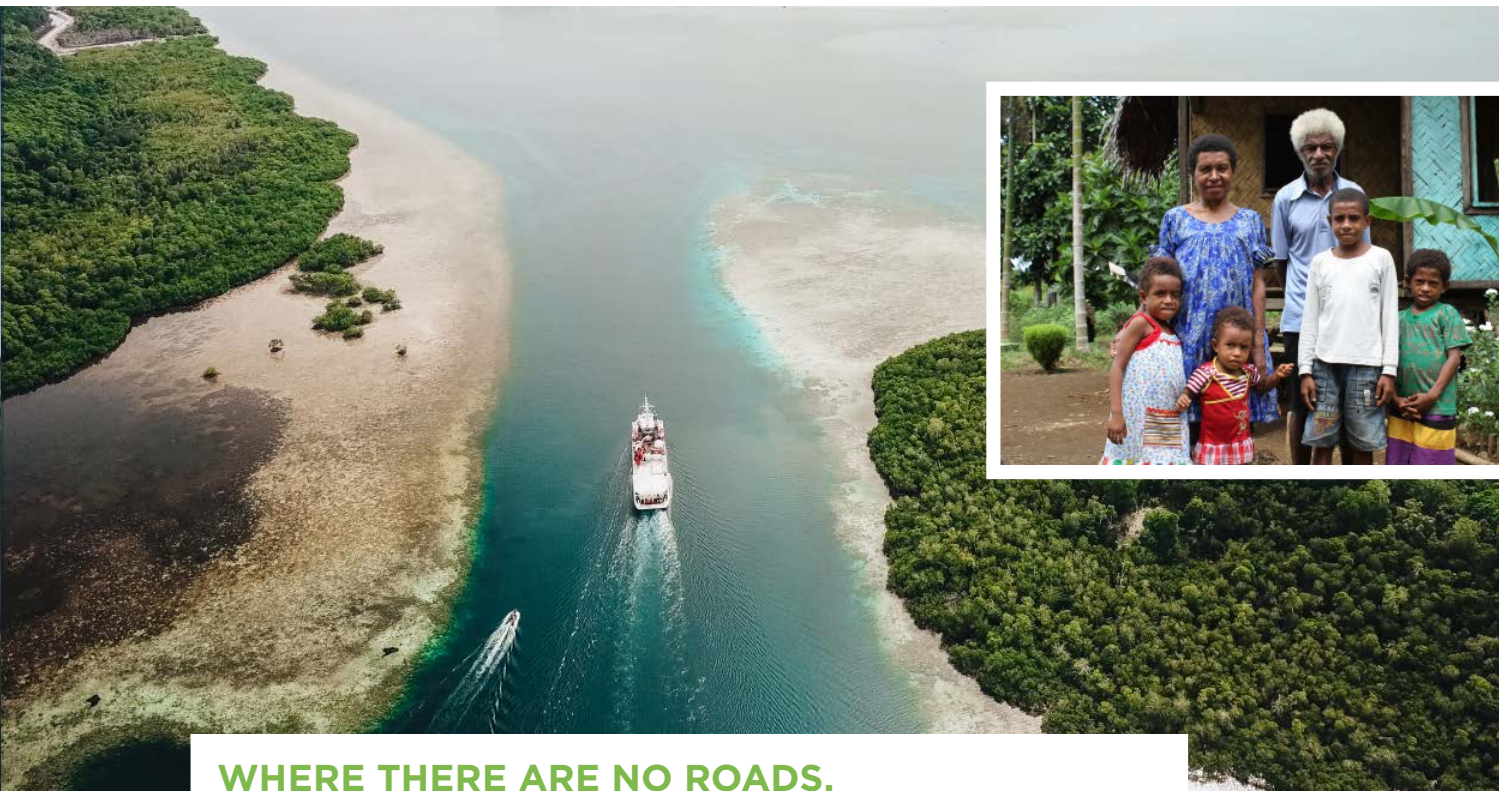
FOR YWAM SHIPS KONA





CASE FOR SUPPORT

ywam ships kona



WHERE THERE ARE NO ROADS, BRIDGES OR AIRPORTS – HELP ARRIVES

This document makes the case for seizing a new opportunity which has been so long in coming for YWAM Ships Kona. Our current location is a leased former hotel in the heart of downtown Kailua-Kona business district on the big island of Hawaii. For seven years, the building, named Port YWAM, has served as an ideal location for training and equipping our staff and ships' crews for the important tasks of bringing education, healing, and hope to people who could not be reached by any means other than a ship. Kona is our logistically important Pacific outreach port.

Now YWAM Ships Kona has been presented with the opportunity to purchase the building. Ownership of the building would ensure our ability to sustain our current work and provide assurance we can continue to grow

the mission. Our case for support of the building purchase is built on the impact YWAM Ships makes now and the greater impact we could make in the future.



SINCE 2013



KAILUA-KONA,
HAWAII



PACIFIC
OUTREACH PORT

YWAM SHIPS KONA



A BUILDING THAT CONTINUES AN AMAZING LEGACY

Is the building's location a coincidence? We don't believe so. Kailua Bay, across the street from the building, is the site where a ship arrived 200 years ago bringing the first missionaries to Hawaii. That ship's arrival brought education, healing and eternal hope. The oppressive religion of the past was quickly exchanged for literacy, community development and an unwavering faith in God. Right across the street from the Port YWAM building, from 1836 to 1898, missionaries would gather on the beach to send missionary ships to other islands to bring the same blessings their island now enjoyed. During this period they sent five ships.

For eight years now, YWAM Ships Kona has continued this amazing legacy to the isolated islands of the Pacific to people who have no roads, bridges, or airports connecting them to the outside world, thus no opportunity to improve their lives. It can change everything.

When a YWAM ship shows up - change begins!

Please join us and advance this life-changing work in many more remote places.



YWAM SHIPS KONA

partner with us

CASE FOR SUPPORT

A SIGNIFICANT OPPORTUNITY BEFORE US

In five years, we could see 1,200 staff and crew members trained and two additional vessels deployed with educational training and medical services provided in 636 village locations. The number of people our ships' crew and students can impact would be as many as 384,863. This is the impact a well-equipped training facility in Kona can produce by seizing the opportunity to purchase the building we've been renting.

BUT TIME IS OF THE ESSENCE.

We started working on raising funds towards this purchase opportunity a year ago, and then COVID-19 hit. Recently, our building has been placed on the market and on September 1st, we received notice that our landlord has accepted a buyer's offer for \$8.2m cash. This means we only have until September 22nd to match the offer, which is our right, and it must close within 120 days. We have prepared for some time now that this day would come and we are now at that moment.

HELP US SEIZE THIS LONG- AWAITED OPPORTUNITY TO PURCHASE THE KONA TRAINING FACILITY.

What It Takes to Own the Building: \$8,200,000

Total Cost \$8,200,000

Prequalified Loan \$4,500,000

Cash in Hand \$460,000

**The balance needed as of today is
\$3,240,000**



HOW YOU CAN PARTNER WITH US

Invest financially in YWAM Ships Kona's impacting presence in Kona and the rest of the Pacific by

Donating online at

ywamshipskona.org/a-permanent-home/

Send a check to

YWAM Ships Kona
75-5687 Alii Dr., Kona
HI 96740

Have questions? Email us at

brett.curtis@ywamships.net

Or call Brett at

+1 808 498 5096

YWAM SHIPS KONA



sustained development

IMPACT: EDUCATION THAT SUSTAINS DEVELOPMENT

Many organizations provide services for people's most urgent health needs, and then they leave. YWAM Ships cares about people's most immediate needs too, but we also care about sustainable improvement. Therefore, we place much emphasis on education so people are empowered to make sure improvement continues long after our ships and crews have departed.



EDUCATIONAL FOCUS

Bible Schools

Navigation & Seamanship Schools

Leadership Development Schools

Various Seminars & Conferences

Short Training Courses for baristas, worship leaders, health enthusiasts, and community developers

CAPACITY BUILDING THROUGH TRAINING

Discipleship Training

Bible Translation Training

Medical Worker Training

Maritime & Ship Operations Training

Skill-based Training



collective impact

“

Our partnership with YWAM Ships Kona has helped to provide essential services to more places, while building capacity for people to continue meeting their development needs

”



*Gov Sasindran Muthuvel,
West New Britain, Papua New Guinea*

“

We look forward to future visits from YWAM teams, building on the outcomes from their recent visit and exploring new areas for collaboration

”

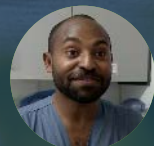


*Christopher J. Loeak, President of the
Republic of the Marshall Islands*

“

I would like to take this time to sincerely thank YWAM Ships Kona for your partnership with us in delivering the much-needed services to our remote disadvantaged communities and urban poor here in Western Highlands Province and the whole of Highlands region of PNG. We really appreciate and value your partnership and contributions

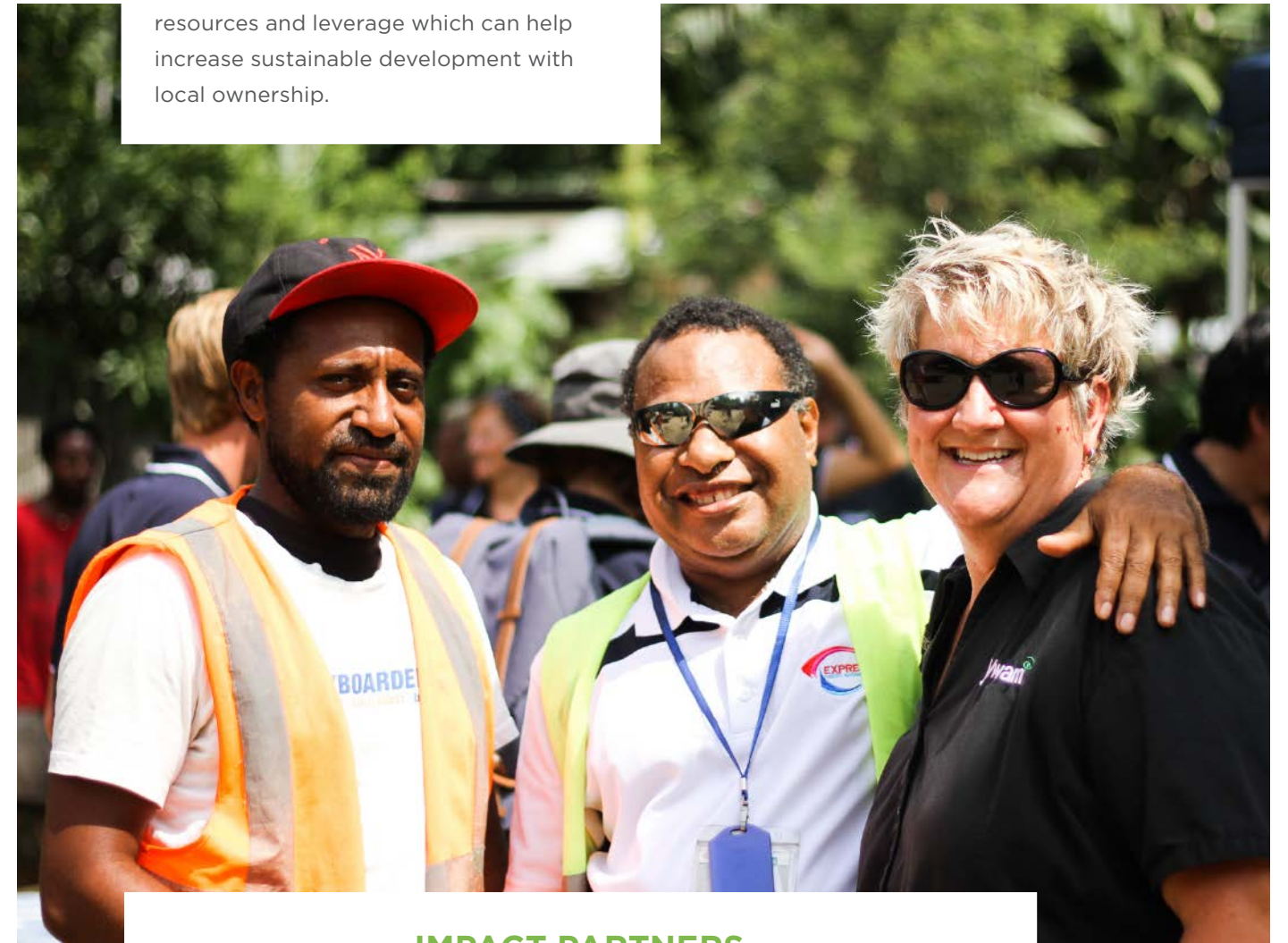
”



*Dr. Waimbe Wahamu, Deputy Chief
Ophthalmologist - Highlands Region PNG*

PARTNERSHIPS THAT PRODUCE GREATER RESULTS

YWAM Ships Kona is a model of collective impact. Working with impact partners on the ground produces greater results than going it alone. Our partners provide the resources and leverage which can help increase sustainable development with local ownership.



IMPACT PARTNERS

National, Provincial and Local
Level Government Leaders

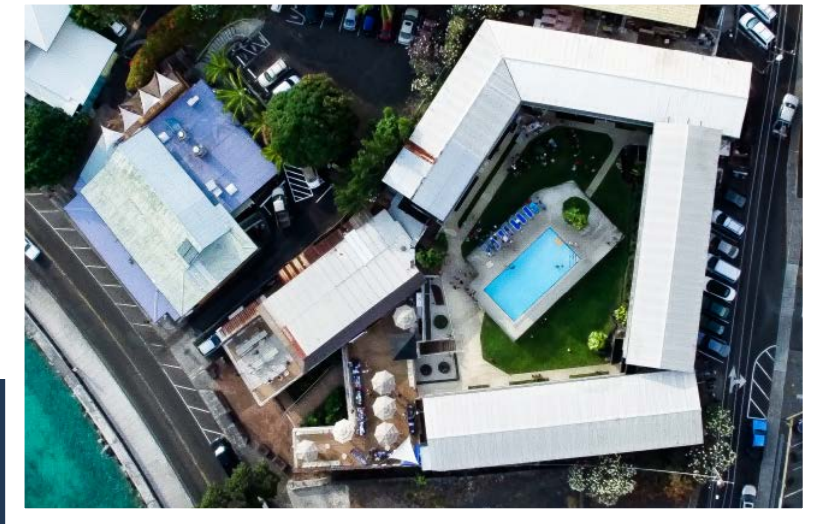
Government and Local
Healthcare Providers

Private Foundations

Universities

Mission Agencies and
Local Churches

Aviation Organizations



**OUR CURRENT LOCATION IN KAILUA-KONA
STRATEGICALLY POSITIONS US TO BRING
HEALING, HEALTH, AND REAL LIFE IN CHRIST
TO OVER 900 ISLANDS OF THE PACIFIC.**



Brett Curtis
President/CEO

We don't believe the location of the building on Kailua Bay is a coincidence. Having looked at other options for a permanent home, we have arrived at the conclusion that owning our current location makes the most fiscal and strategic sense. We must take advantage of this opportunity now to continue this amazing legacy. Please join us in making this happen.

Brett Curtis

A PERMANENT

home

FOR YWAM SHIPS KONA

